

# PSRC Regional Transportation Plan & Coordinated Mobility Plan Development

April 28, 2025

안녕하세요

您好

¡Hola!

hello

Здравствуйте!

Xin chào

أهلاً وسهلاً



Puget Sound Regional Council



*We are leaders in the region to realize equity for all. Diversity, racial equity and inclusion are integrated into how we carry out all our work.*

[psrc.org/equity](https://psrc.org/equity)



# Today

**We will talk about...**

- **Regional Transportation Plan**
- **Coordinated Mobility Plan**

**AND will hear from you about...**

- **Key Transportation Needs in Your Community**





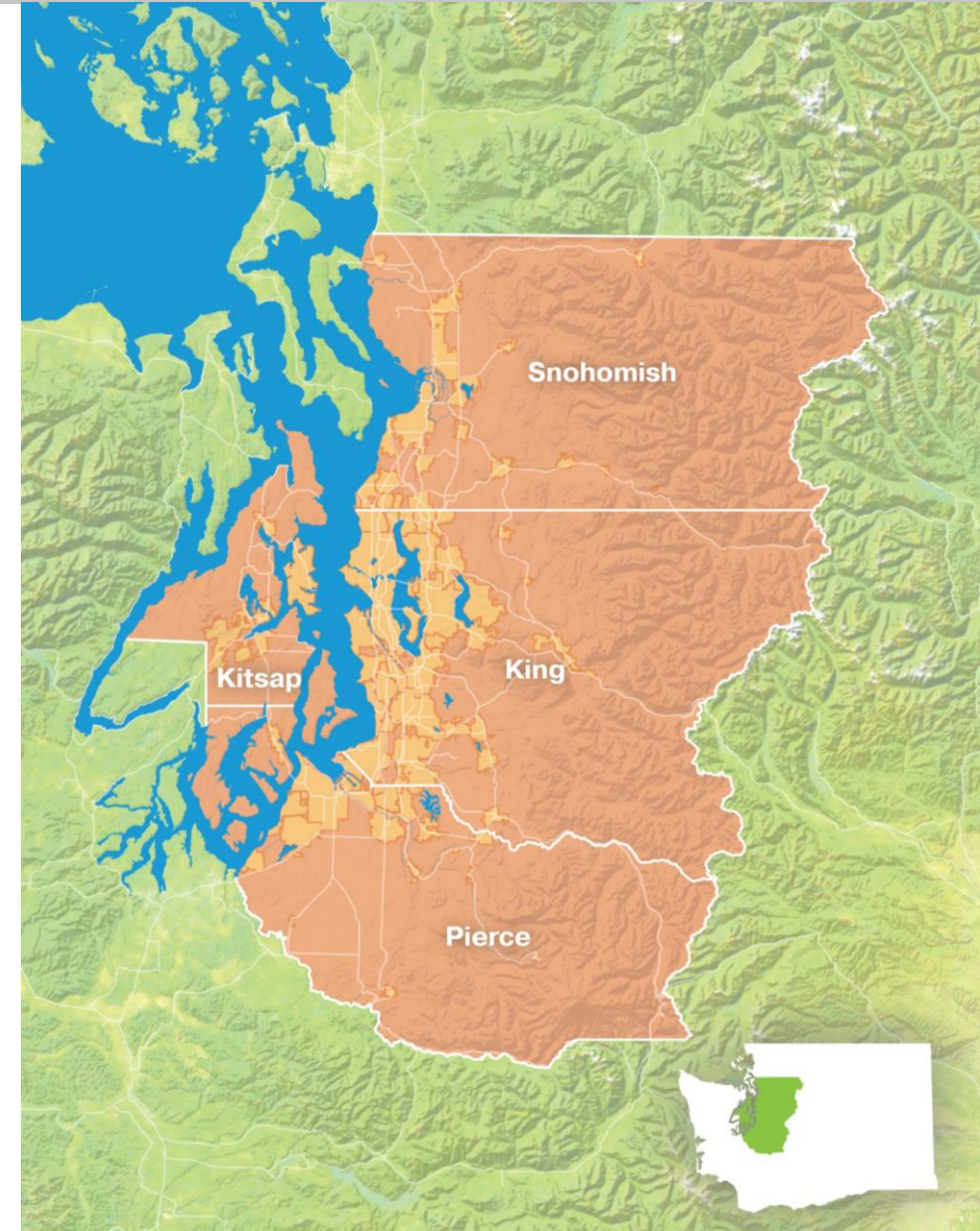
# Who are we?



Puget Sound Regional Council

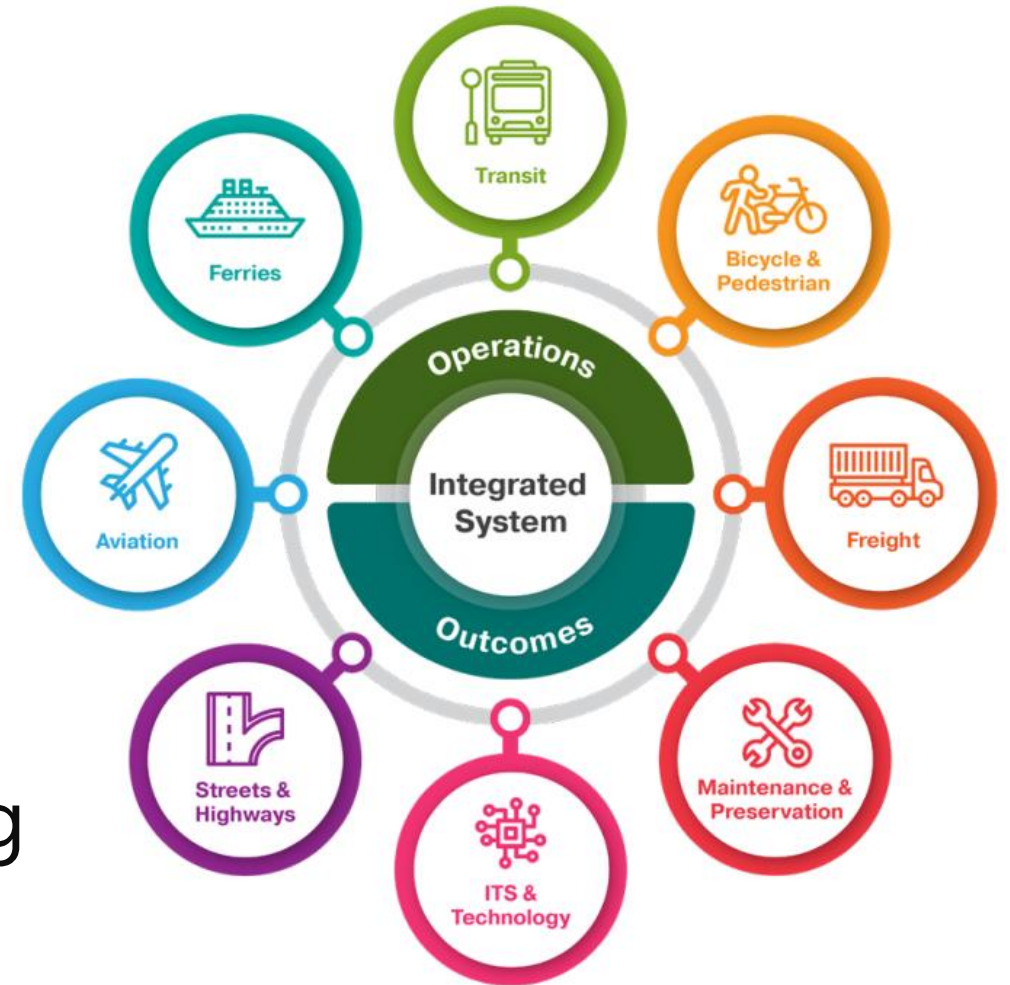
---

- Metropolitan Planning Organization
- Coordinates transportation, economic development, land use planning, and more.
- King, Kitsap, Pierce, and Snohomish counties (4.3 million people).
- Members include 82 cities and towns & 9 transit agencies.



# What is a Regional Transportation Plan?

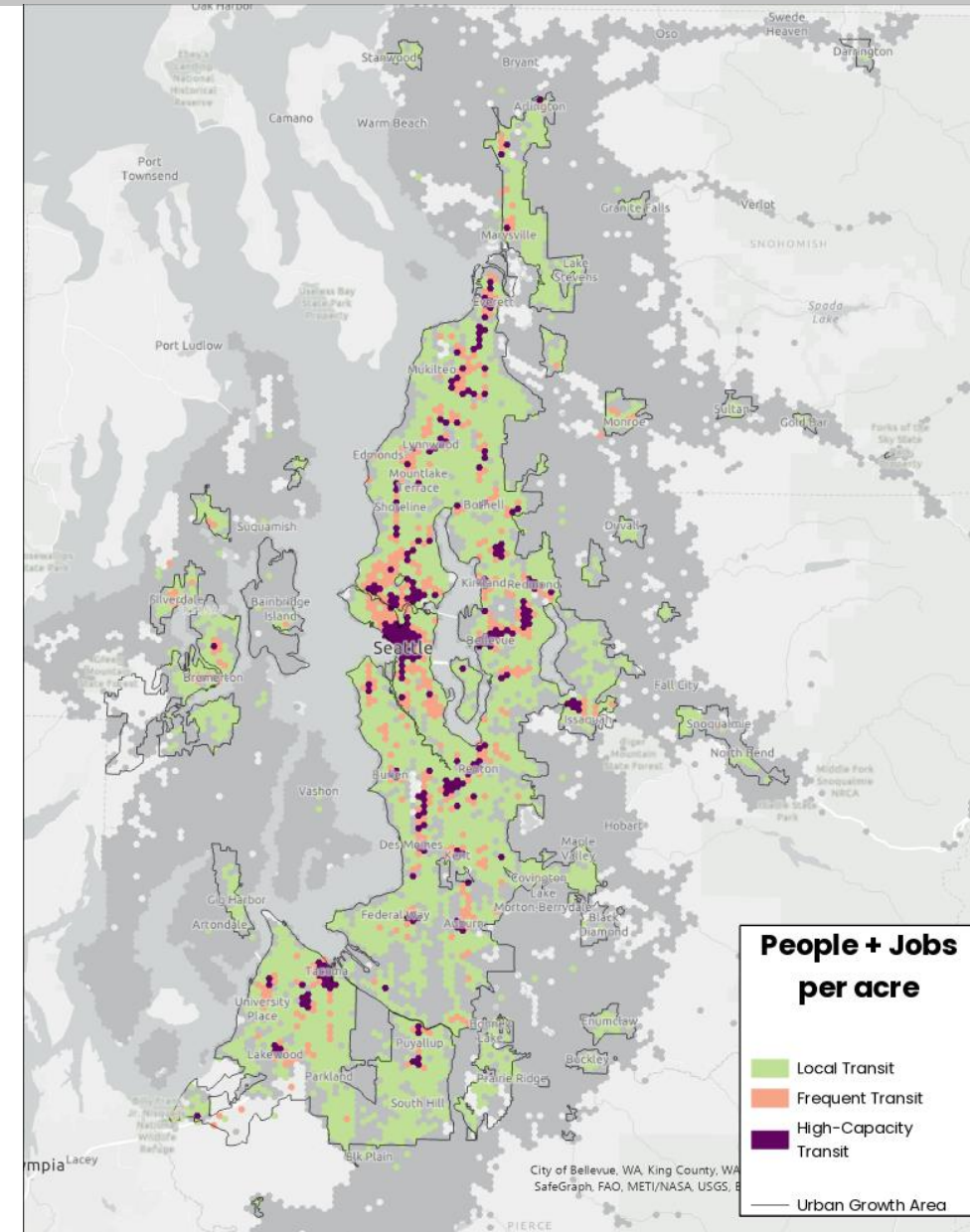
- Lays out the region's **long-term transportation needs and goals**.
- **Developed collaboratively** with cities, counties, transportation agencies, and the public.
- **Updated every four years** according to state and federal requirements.



# Current Transportation System

## The Regional Transportation Plan will:

- Look at **where people & jobs are** today and planned for 2050 – at varying densities.
- Identify potential gaps in the transportation system supporting those places.





# Current Transportation System – Transit Example

## Transit Service & Densities

Density	Frequency & Span	Transit Service
at least 7 people + jobs per acre	Service with at least 2 trips per hour between 6am and 8pm	Local Transit
at least 15 people + jobs per acre	Service with at least 3 trips per hour between 5 am and 10pm	All Day Service
at least 25 people + jobs per acre	Service with at least 4 trips per hour between 6am and 6pm	Frequent Service
at least 40 people + jobs per acre	BRT, Light Rail, Commuter Rail or Ferry	High-Capacity Transit

All analyses will include details for:

- Equity Focus Areas
- Counties
- Regional Geography
- Regional Centers



# Regional Transportation Plan Engagement



Online Engagement Hub



Outreach Meetings



Focus Group  
Interviews



Social Media



Survey



# Coordinated Mobility Plan

- Highlights transportation needs of the **people with accessibility and mobility challenges.**
- **Lays out prioritized strategies** addressing the needs.
- Includes a **regional inventory** of existing transportation programs.





# Transportation Options



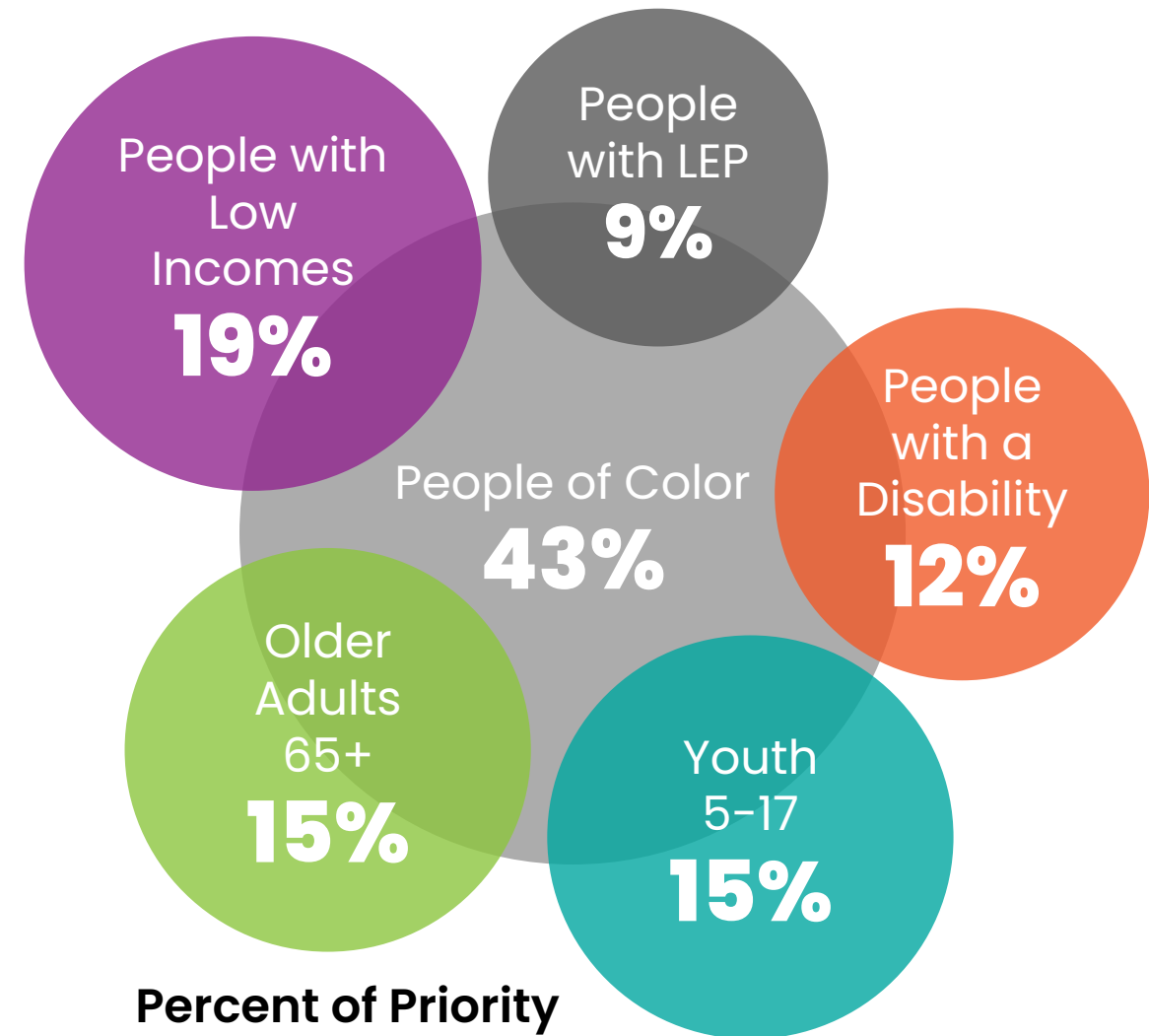
# Specialized Transportation





# A large percentage of our region's population falls into at least one of the priority populations.

- The number of **older adults, people with disabilities, and people with limited English proficiency** is growing faster than the overall population.
- About **1 in 5 people** in our region have **low incomes**.



**Percent of Priority  
Population Percentage  
Breakdowns, 2023**



# Our region is aging and facing more accessibility needs.

- Across the region, about **1 in 3 adults aged 65 and older have a disability.**
  - For those over 85, 71% have at least one disability.
- By 2050, **1 out of every 5 people** in the region will be **65 or older.**

Data source: U.S. Census Bureau, American Community Survey 1-Year, 2023





gain economies of scale, eliminate duplication, expand service, improve the quality of service to better address the regional transportation needs of transportation-disadvantaged people in the greater Sound region.

## GOAL #1: PUT PEOPLE FIRST •

People should be able to afford transportation, use it safely, and get to where they need to go without an overly burdensome process or trip time. Providers should ensure fairness, justice, and equity in the delivery of transportation services.

### PRIORITY STRATEGIES

A. Develop and deliver affordable, accessible, and convenient transportation programs and projects that address the needs and gaps identified in the Coordinated Plan.

B. Improve connections to and within the regional transportation system.

PRIORITY STRATEGIES  
Continuity of passenger facilities, traveler information, and ride share programs.

## Central Puget Sound Region

### GOAL #2: MOVE PEOPLE EFFICIENTLY

Resources for regional transportation services should be used efficiently through the use of shared resources, such as shared vehicles, shared space, and shared infrastructure. Transportation services should be provided in a way that is efficient, effective, and equitable. Transportation services should be provided in a way that is efficient, effective, and equitable.

#### HIGH PRIORITY STRATEGIES

C. Identify current transportation services and assess their effectiveness.

D. Develop and deploy innovative technologies that improve transportation services.

E. Develop and deploy innovative technologies that improve transportation services.

F. Develop and deploy innovative technologies that improve transportation services.

G. Develop and deploy innovative technologies that improve transportation services.

H. Develop and deploy innovative technologies that improve transportation services.

I. Develop and deploy innovative technologies that improve transportation services.

J. Develop and deploy innovative technologies that improve transportation services.

K. Develop and deploy innovative technologies that improve transportation services.

L. Develop and deploy innovative technologies that improve transportation services.

M. Develop and deploy innovative technologies that improve transportation services.

N. Develop and deploy innovative technologies that improve transportation services.

O. Develop and deploy innovative technologies that improve transportation services.

P. Develop and deploy innovative technologies that improve transportation services.

Q. Develop and deploy innovative technologies that improve transportation services.

R. Develop and deploy innovative technologies that improve transportation services.

S. Develop and deploy innovative technologies that improve transportation services.

T. Develop and deploy innovative technologies that improve transportation services.

U. Develop and deploy innovative technologies that improve transportation services.

V. Develop and deploy innovative technologies that improve transportation services.

W. Develop and deploy innovative technologies that improve transportation services.

X. Develop and deploy innovative technologies that improve transportation services.

Y. Develop and deploy innovative technologies that improve transportation services.

Z. Develop and deploy innovative technologies that improve transportation services.

# Transportation Needs in Your Community

# Key Mobility Needs Identified in the Current Plan

- **Shorter travel time with fewer transfers.**
- **More services at times and places people need them.**
- **Easy-to-find information** on services and language support.
- **Better access to healthcare and essential services.**
- **Affordable options** for low-income families.
- **Well-connected, ADA-accessible infrastructure.**
- **Better regional coordination** to meet growing needs.





# **Which transportation needs identified in the current plan resonate most with you and your community?**

- **Shorter travel time with fewer transfers.**
- **More services at times and places people need them.**
- **Easy-to-find information** on services and language support.
- **Better access to healthcare and essential services.**
- **Affordable options** for low-income families.
- **Well-connected, ADA-accessible infrastructure.**
- **Better regional coordination** to meet growing needs.



# Additional Questions

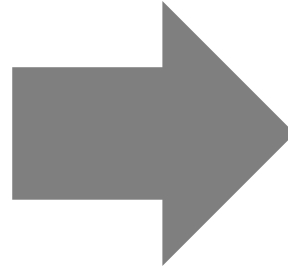
- What are the **biggest challenges** you face when...
  - Using public transit (buses, rails, ferries)?
  - Using specialized transportation (paratransit, demand-response shuttles)?
  - Walking, biking, or rolling?
- Are there **any other challenges** using other transportation options (such as ride-hailing)?





# Next Steps

## Phase I (Fall 2024–Spring 2025)



## Phase II (Summer–Fall 2025)



Review feedback and data to assess the **transportation needs** of priority populations.

Develop **prioritized strategies** based on feedback.

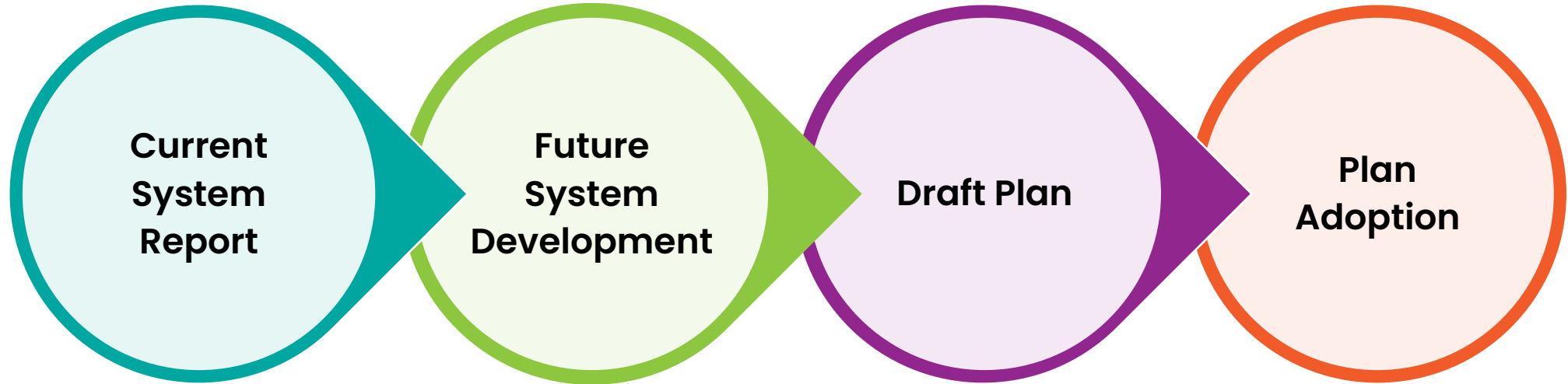
Community engagement continues



# Regional Transportation Plan Update Process

2025

2026



**Community Engagement Informs the Plan**  
Transportation Needs & Priorities





Want to learn more about PSRC and transportation planning? Visit [psrc.org](https://psrc.org) or email [Transportation@psrc.org](mailto:Transportation@psrc.org)

**Thank You!**

**Gil Cerise**

Program Manager

[gcerise@psrc.org](mailto:gcerise@psrc.org)

**Jean Kim**

Senior Planner

[jkim@psrc.org](mailto:jkim@psrc.org)



Puget Sound Regional Council